



CITGO® CompKleen® Synthetic Cleaner

OVERVIEW



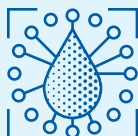
- A high-performance cleaner designed to loosen, remove, and suspend the varnish, sludge, and carbon typically found in rotary screw and rotary vane compressors. These deposits can result in operational problems, plus increased maintenance and operational cost.

FEATURES & BENEFITS



- Designed for use as a supplemental lubricant additive to remove sludge, varnish, and carbon from the compressor system while in operation.
- Virtually eliminates the need for disassembling for cleaning.
- For maximum benefit, use prior to each lubricant change.

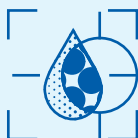
APPLICATIONS



- Add one gallon of CITGO CompKleen Synthetic Cleaner concentrate for every 10 gallons of compressor oil in the unit; drain enough oil from the system unit to allow for the addition of the concentrate.
- Continue to operate the compressor for 40 to 60 hours, allowing the treated oil to circulate through the system to loosen, dissolve and suspend the deposits.
- It is very important that the fluid be drained from the system while hot to avoid re-depositing the contaminants. After draining the fluid, replace the filters and refill with the proper CITGO lubricant.
- Flushing the system before refilling may be necessary if the deposits were especially heavy.
- Can be used to clean and remove deposits from hydraulic systems, gear boxes, heat transfer systems, and machine tools.

NOTE: It is the user's responsibility to follow instructions, and ensure proper and complete drainage. Product sampling and testing are highly recommended. For additional technical information and assistance, please contact the CITGO Lubricants Product Answer Line at 800-248-4684 or email lubeshelp@citgo.com.

PROPERTIES



Typical Properties for CompKleen Synthetic Cleaner:

Material Code	632599001
Gravity, ASTM D4052, °API	12.2
Density, lb/gal	8.20
Color ASTM, D1500	1.0
Viscosity ASTM D445	
cSt at 40°C	66
cSt at 100°C	7.3
Flash Point PM ASTM D93, °F (°C)	410 (210)

CITGO and CompKleen are registered trademarks of CITGO Petroleum Corporation. All other registered trademarks or trademarks are the property of their respective owners. Values shown are typical values only and do not constitute a specification. The information contained herein is subject to change without notice.