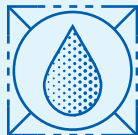




# CITGO® Regular Gear Oil SAE 90

## OVERVIEW



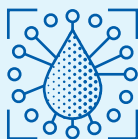
- Designed for some manually operated transmissions and spiral-bevel axles operating under mild conditions.
- Made from high quality, refined mineral oil and selected inhibitors. Available in SAE 90 grade.

## FEATURES & BENEFITS



- Additives provide inhibition of oxidation, corrosion, and foam at levels not normally achieved with straight mineral oil.
- API Service Classification GL-1\*. Friction modifiers and extreme pressure agents are not employed in GL-1 oils.

## APPLICATIONS

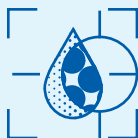


- Recommended for use in certain transmissions, final drives, and miscellaneous applications in bearing and gear lubrication of mobile equipment where GL-1 or straight mineral oil is specified by the manufacturer.

- Refer to equipment owner's manual for proper lubricant recommendation.

\*CITGO Premium Gear Oil (MP) is recommended for hypoid axles and other automotive applications requiring an extreme pressure lubricant for GL-5 service.

## PROPERTIES



### Typical Properties for CITGO Regular Gear Oil:

SAE Grade	90
Material Code	631502001
Gravity, ASTM D4052, °API	27.5
Density, lb/gal at 60°F	7.41
Flash Point, COC, ASTM D92, °F (°C)	420 (215)
Viscosity ASTM D445	
cSt at 40°C	200
cSt at 100°C	17
Viscosity, ASTM D2161	
SUS at 100°F	1050
SUS at 210°F	91
Viscosity Index, ASTM D2270	95
Pour Point ASTM D97, °F (°C)	0 (-18)

CITGO is a registered trademark of CITGO Petroleum Corporation. All other registered trademarks or trademarks are the property of their respective owners. Values shown are typical values only and do not constitute a specification. The information contained herein is subject to change without notice.