



# CITGO<sup>®</sup> CITGARD<sup>®</sup> 700

## Synthetic Blend Heavy Duty Engine Oils

### OVERVIEW



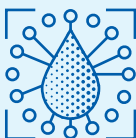
- Synthetic blend engine oils that deliver the performance needed for newer engine designs, while improving performance in older engines.
- Engineered with proprietary additive technology that protects engines running at higher operating temperatures and fuel injection pressures, while meeting tighter wear limits and lower emission requirements.
- SAE 10W-30 grade assists in attaining the new Phase II fuel efficiency standards by improving fuel economy, increasing cold startup lubrication, and providing superior engine durability.

### FEATURES & BENEFITS



- SAE 10W-30 offers up to 3% fuel economy advantage over conventional SAE 15W-40 viscosity grade oils.
- Maintain viscosity over extended service drain intervals.
- Up to 100% increase in oxidation protection compared to conventional CJ-4 engine oils.
- Advanced wear protection in both older and newer engines.
- Reduced air entrainment in high-pressure hydraulic fuel injection systems.
- Always follow OEM recommendations when extending oil drain intervals.

### APPLICATIONS

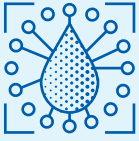


- Recommended for superior performance for commercial trucks, agricultural equipment, construction equipment, stationary engines, and other diesel-fueled engine applications including Caterpillar ECF-3, Mercedes 228.31, MAN M3575, MTU Category 2.1, Paccar, Navistar, and Allison TES-439 (15W-40 only).
- Note: Use of diesel engine oils in automotive gasoline engines can shorten the life of catalytic converters.
- Refer to equipment owner's manual for proper lubricant recommendation.

Approved for equipment requiring:

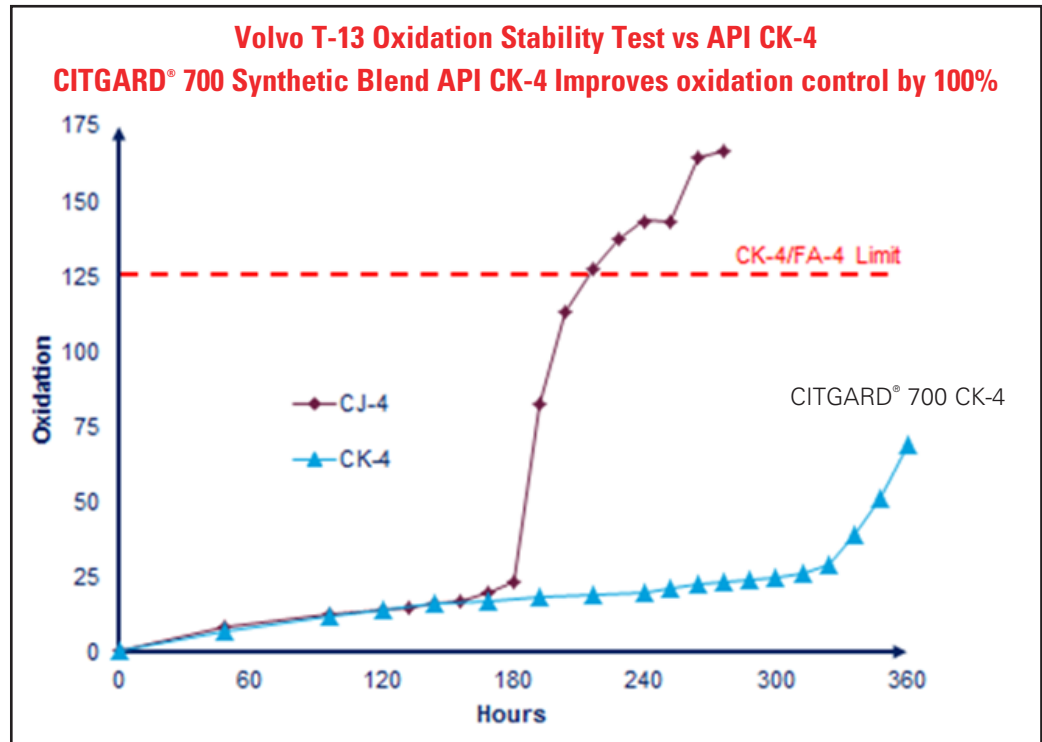
API CK-4, CJ-4, CI-4 Plus, CI-4, CH-4/SN (SN applies to 15W-40 only)  
 Cummins CES 20086  
 Detroit Diesel DFS 93K222  
 Volvo/Mack/Renault VDS-4.5/EOS-4.5/RLD-3  
 Ford WSS-M2C171-F1

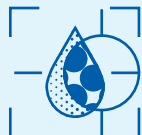
**APPLICATIONS**



**API Comparison Chart**

Category	CITGARD® 700 Synthetic Blend API CJ-4	CITGARD® 700 Synthetic Blend API CK-4
Back serviceable	YES	YES
Viscosity grades	15W-40/10W-30	15W-40/10W-30
Fleet million mile engine test rating	Better	Best
100% improved oxidation stability	NO	YES
Greater shear stability vs. conventional API CJ-4	YES	YES
Aeration control vs. conventional API CJ-4	Better	Best
SAE 10W-30 sustains improved fuel economy through 50,000 miles	Better	Best
Compatible with conventional API CJ-4 oils	YES	YES
Best Overall Performance and Backward compatibility	Better	Best



**PROPERTIES****Typical Properties for CITGO CITGARD 700 Synthetic Blend Heavy Duty Engine Oils:**

<b>SAE Grade</b>	<b>10W-30</b>	<b>15W-40</b>
Material Code	622721001	622723001
Gravity, ASTM D4052, °API at 60°F	31.6	30.5
Pounds/Gallon at 60°F	7.25	7.30
Specific Gravity at 60°F	0.87	0.88
Viscosity ASTM D445		
cSt at 40°C	80.9	111.9
cSt at 100°C	11.9	15.2
Viscosity Index	142	141
CCS Viscosity, cP, @ Temperature	6,159 @ -25°C	4677 @ -20°C
MRV Viscosity, cP, @ Temperature	23,250 @ -30°C	19,968 @ -25°C
MRV Yield Stress, Pa, @ Temperature	<35	<35
Pour Point, °F (°C)	-38 (-39)	-33 (-36)
Flash Point, COC, °F (°C)	435 (224)	439 (226)
Noack Evaporative, ASTM D5800, % Loss	12.0	11.0
Color, ASTM D1500	L3.0	L3.5
Total Base Number, ASTM D2896	10	10
Sulfated Ash, ASTM D874, % wt	1.0	1.0

CITGO and CITGARD are registered trademarks of CITGO Petroleum Corporation. All other registered trademarks or trademarks are the property of their respective owners. Values shown are typical values only and do not constitute a specification. The information contained herein is subject to change without notice.